

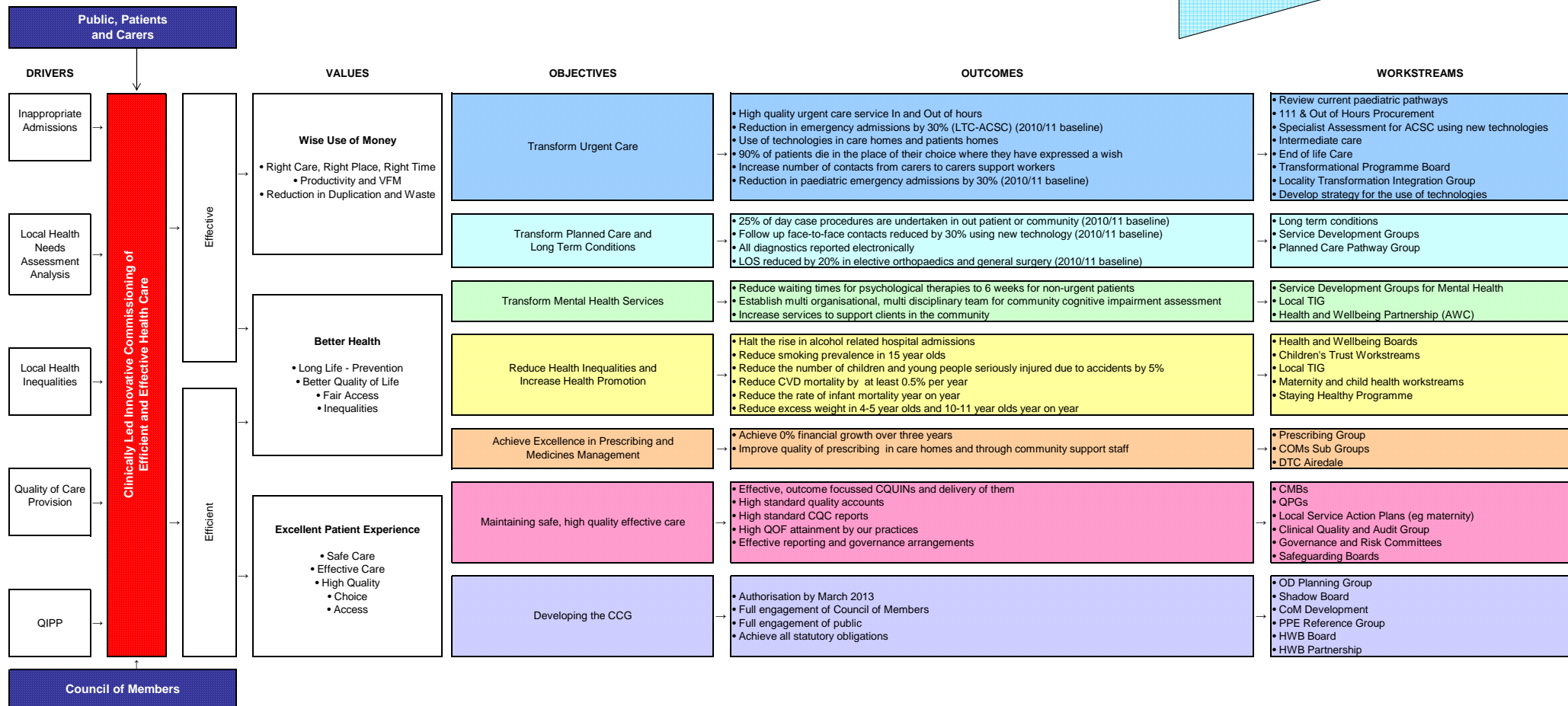
## DRAFT - Airedale, Wharfedale and Craven CCG - Plan on a Page - 2012-2017 (5 Year Plan)

1) We will ensure the **local** provision of care wherever appropriate

2) In transforming services we will understand the impact on the range of providers, ie, primary, secondary, voluntary and independent sector and the Local Authority within the context of a **sustainable** local health and social care economy

3) We will work towards the **integration** of the commissioning and provision of health and social care

4) We will **engage** with the Council of Members Representatives, patients and the public, other professionals and stakeholders



**NHS Airedale, Wharfedale and Craven Clinical Commissioning Group (NHS AWC CCG)**  
**Governance Structure**

